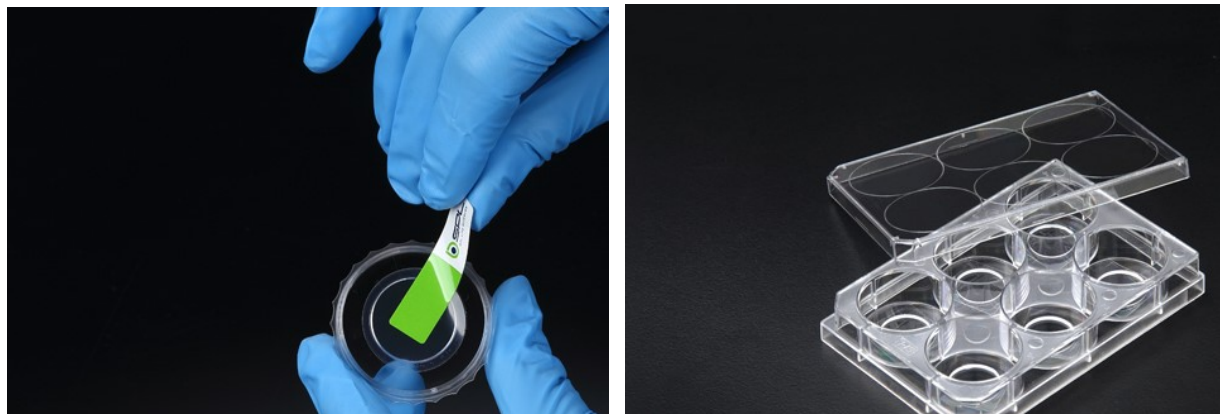


1. Product: Confocal dish & plate

SPL confocal products allow researchers to acquire high resolution microscopic images of cells in 35 mm culture dishes or 6 well plates. These products contain low auto-fluorescence glass and FLux and ideal for confocal microscopy, phase contrast microscopy, live cell imaging and micro-manipulations.



2. Experimental condition (by the third lab)

1) Cell & Culture media

ADSCs (passage 8)	DMEM/LOW GLUCOSE (HyClone, Cat. #30021.01) 10% FBS (HyClone, Cat. #SH30919.03) 1X Penicillin-Streptomycin (HyClone, Cat. #SV30010)
----------------------	---

2) Preparation for confocal

- ① PBS
- ② 3.7% paraformaldehyde
- ③ 0.1% Triton X-100
- ④ 1% BSA
- ⑤ Anti-body (Phalloidin-FITC, SIGMA, Cat. #P5282)
- ⑥ Mounting solution (VECTASHIELD, Cat. #H-1200)

3) Instrument: Leica TCS SP5 II confocal microscope

3. Results

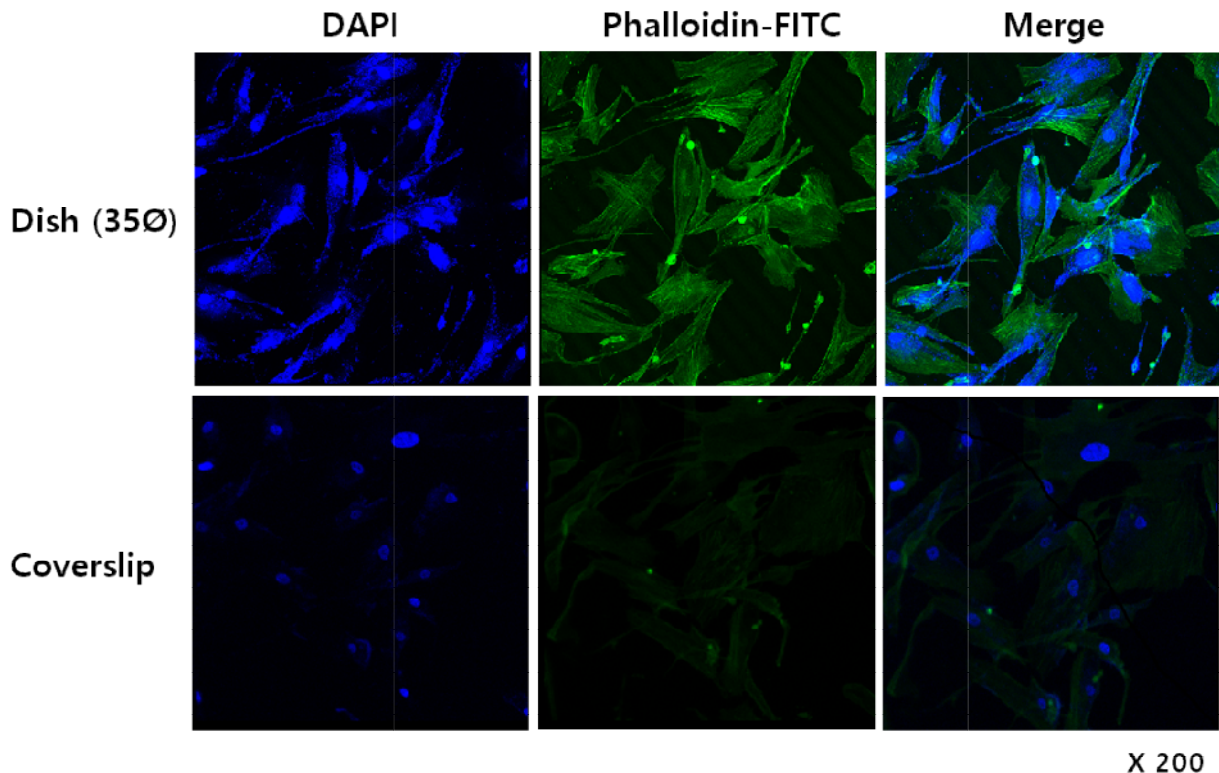


Figure 1. Confocal image of ADSCs

4. Conclusion

SPL Confocal dish & plate provide high resolution microscopic images with low autofluorescence compared to the traditional microscopic product and they carry out fluorescent analysis using animal cultured cells.

5. Ordering Information

Cat.No.	Type	Color	Material	External Dimension (mm)	Hole(mm)	External Grip	Surface treatment	Sterile	Packaging
Dish									
100350	Adhesion	Clear	PS/Glass	35.00 x 10.00	13Ø	+	-	+	5 / 100
100351	Insert	Clear	PS/Glass	35.00 x 10.00	-	+	-	+	10 / 500
101350	Adhesion	Clear	PS/Glass	35.00 x 10.00	20Ø	+	-	+	5 / 100
102350	Adhesion	Black	PS/Glass	35.00 x 10.00	13Ø	+	-	+	5 / 100
103350	Adhesion	Black	PS/Glass	35.00 x 10.00	20Ø	+	-	+	5 / 100
200350	Adhesion	Clear	PS/Glass	35.00 x 10.00	13Ø	+	+	+	5 / 50
210350	Adhesion	Clear	PS/FLux	35.00 x 10.00	13Ø	+	+	+	5 / 50
211350	Adhesion	Clear	PS/FLux	35.00 x 10.00	20Ø	+	+	+	5 / 50
212350	Adhesion	Black	PS/FLux	35.00 x 10.00	13Ø	+	+	+	5 / 50
213350	Adhesion	Black	PS/FLux	35.00 x 10.00	20Ø	+	+	+	5 / 50
Plate									

30106	Adhesion	Clear	PS/Glass	85.40 x 127.60	13Ø	-	-	+	1 / 4
30206	Adhesion	Clear	PS/Glass	85.40 x 127.60	20Ø	-	-	+	1 / 4
230106	Adhesion	Clear	PS/FLux	85.40 x 127.60	13Ø	-	+	+	1 / 4
230206	Adhesion	Clear	PS/FLux	85.40 x 127.60	20Ø	-	+	+	1 / 4

www.spllifesciences.com

For technical assistance, contact SPL R&D Center at:

Tel: +82-31-533-4800; Fax: +82-31-533-1430; e-mail: spl@ispl.co.kr

To place an order, contact your local distributor or

Tel: +82-31-533-4800; Fax: +82-31-533-1430; e-mail: business@ispl.co.kr