

XLarge DNA Ladder RTU



Cat. No.: SD013-R500

Size: 52 µg / 500 µl

Cat. No.: SD013-R025

Size: 2.6 µg / 25 µl

Description

A unique combination of a number of proprietary plasmids digested with appropriate restriction enzymes and PCR products to yield 14 fragments, suitable for use as molecular weight standards for agarose gel electrophoresis. The DNA includes fragments ranging from 250-25K base pairs. The 1K and 3K bands have increased intensity to serve as reference points. The approximate mass of DNA in each band is provided (0.52 µg a load) for approximating the mass of DNA in comparably intense samples of similar size.

Source

PCR products and double-stranded DNA digested with appropriate restriction enzymes, are phenol extracted and equilibrated to 10 mM Tris-HCl (pH 8.0) and 10mM EDTA.

Range: 250-25K base pairs

Number of Bands: 14

Concentration: 104 µg / ml

Recommended Load: 5 µl / well

Containing bromophenol blue and xylene cyanol FF as tracking dyes.

Storage

Store at 25°C for 6 months

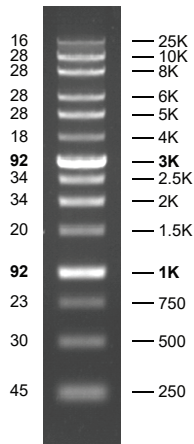
Store at 4°C for 12months

Store at -20°C for 24 months

All products are for research use only.

DNA Mass
(ng/5µl)

Base Pairs



0.7 % TAE agarose gel