

# Immunoplate Strip

(#38096/38196/38496/38596)

## 1. Description

SPL Life Sciences manufactures microplates for diagnostics and immunological researches. SPL provides researchers with a variety of microplates dedicated to the immunoassay.

- **Maxibinding** : Modified polystyrene surface for higher binding capacity for proteins and other molecules with both hydrophilic and hydrophobic regions. (Recommended for most ELISA experiments)
- **Medibinding** : Surface adsorbs proteins and molecules that consists of intermediate hydrophobic and hydrophilic properties. (Antigen/Antibody ELISA; More hydrophobic compared to Maxibinding Plates)
- **Unibinding** : Suitable for adsorption of hydrophobic molecules. (Antigen ELISA)
- **Multibinding** : Suitable specifically for adsorbing hydrophilic molecules. (Antigen ELISA)

## 2. Features

- ❖ 8 well strip type
- ❖ No Lid
- ❖ Developed for immunoassay(ELISA) and general binding assay
- ❖ Flat bottom
- ❖ Uniform surface homogeneity
- ❖ Raised rims on the wells
- ❖ Alphanumeric labeling
- ❖ Designed for easy handling and automation

## 3. Product Range

Cat. No.	Material	Surface Type	External Dimension w x l x h (mm)	Bottom Surface Area (cm <sup>2</sup> )	Total Vol. (μl)	Working Vol. (μl)	Packaging
38096	PS	Maxibinding	85.4 x 127.6 x 14.4	0.33	300	200	10 / 100
38196	PS	Medibinding	85.4 x 127.6 x 14.4	0.33	300	200	10 / 100
38496	PS	Unibinding	85.4 x 127.6 x 14.4	0.33	300	200	10 / 100
38596	PS	Multibinding	85.4 x 127.6 x 14.4	0.33	300	200	10 / 100

## 4. Certification

SPL Life Sciences hereby certifies that the product identified above, inspected to be in compliance with product quality specification and requirements as documented in our ISO 9001:2015 Quality Management System (K-QA-Q031478) in Korea.

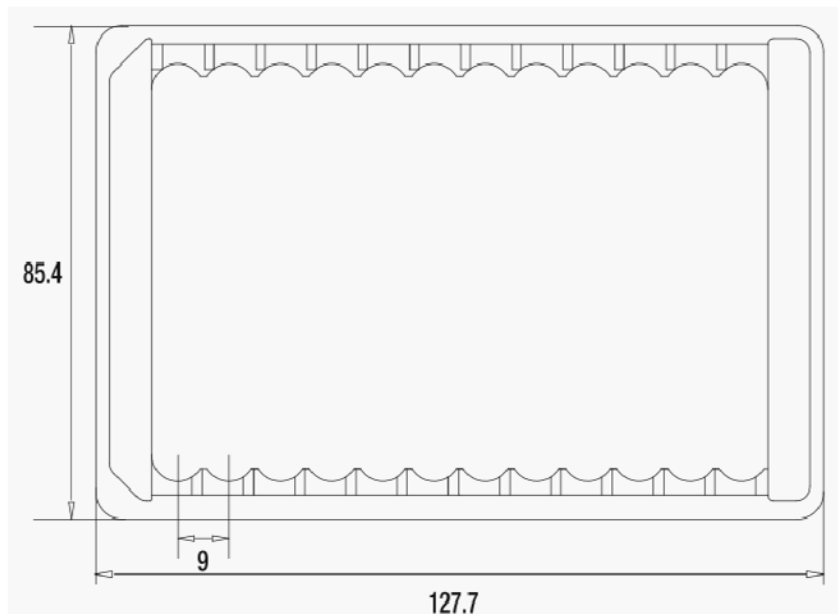
## 5. Specifications & Technical Drawing

### - Specifications

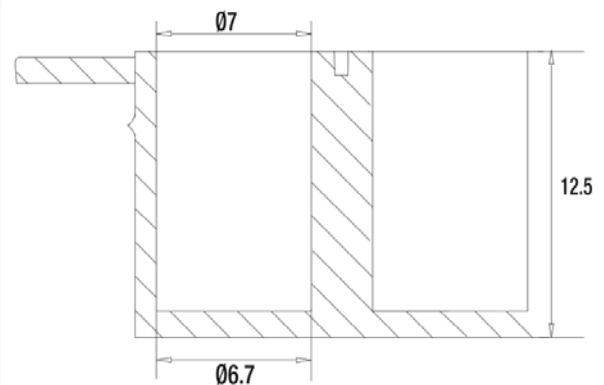
Strip	Dimensions		Material (Resin)	Packaging
	Plate module	Well		
Length: 8.50 mm Width: 81.00 mm Height: 12.50 mm	Length: 85.40 mm Width: 127.60 mm Height: 14.30 mm	Diameter: 6.70 mm Depth: 11.30 mm Center to Center: 9.00 mm	Crystal-grade polystyrene (PS)	<ul style="list-style-type: none"> <li>▪ Pieces/Sleeve: 10</li> <li>▪ Pieces/Case: 100</li> </ul>

### - Technical Drawing

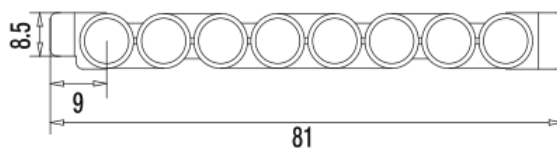
**Plate Module**



**Flat bottom**



**Strip**



[www.spllifesciences.com](http://www.spllifesciences.com)

For technical assistance, contact SPL R&D Center at:

Tel: +82-31-533-4800; Fax: +82-31-533-1430; e-mail: [spl@ispl.co.kr](mailto:spl@ispl.co.kr)

To place an order, contact your local distributor or

Tel: +82-31-533-4800; Fax: +82-31-533-1430; e-mail: [business@ispl.co.kr](mailto:business@ispl.co.kr)

**SPL-TDS-IMPS**

*For Research Use Only. Not intended for use in diagnostic or therapeutic procedures.*

© SPL Life Sciences Co., Ltd., Version 4, November 20<sup>th</sup>, 2018